



RECP #: 752654

RECORDED 5/8/2019 AT 1:11 PM BK# 2620 PG# 1696  
Debra K. Lee, CLERK OF LARAMIE COUNTY, WY PAGE 1 OF 1

# STATE OF WYOMING CORNER RECORD

(In compliance with the CORNER PERPETUATION AND FILING ACT, Wyoming Statutes, 1997 Section 33-29-140, et. seq., and the Rules and Regulations of the Board of Registrations for Professional Engineers and Professional Land Surveyors)

## WEST QUARTER CORNER SECTION 31, T. 18 N., R. 62 W., 6TH P.M., LARAMIE COUNTY, WYOMING

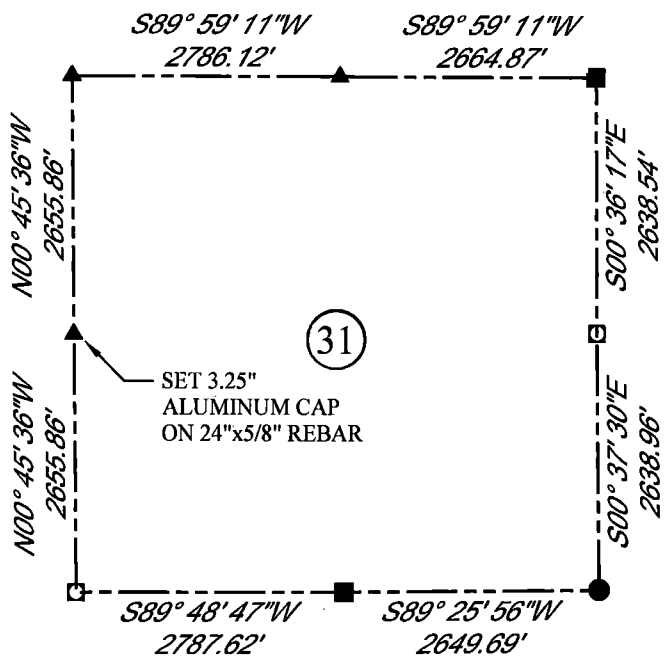
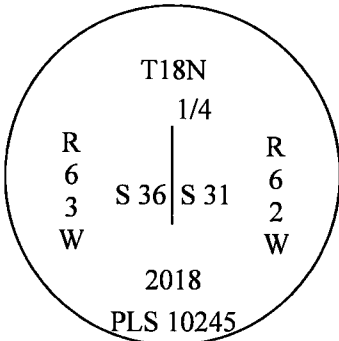
GLO: SET A SANDSTONE 20X12X3, 15 IN. DEEP, MARKED 1/4 ON THE WEST SIDE FOR 1/4 SEC. COR.

FOUND: NOTHING. SET ALUMINUM CAP AT PROPORTIONATE (SINGLE) DISTANCE.



SCALE: NONE  
NORTH DETERMINED BY  
G.P.S OBSERVATIONS

SET 3.25" ALUMINUM CAP ON  
#5 REBAR, AT SURFACE,  
STAMPED AS SHOWN. SET A  
FIBERGLASS ROD ON NORTH  
SIDE OF SET CORNER



### LEGEND:

- FOUND BLM CAP
- FOUND USFS CAP
- FOUND STONE
- FOUND PRIVATE MONUMENT
- ◆ CALCULATED POSITION
- ▲ SET MONUMENT (LS10245)
- SECTION LINE

DATE OF FIELD WORK: 10/3/2018 OFFICE REFERENCE: MERIDEN

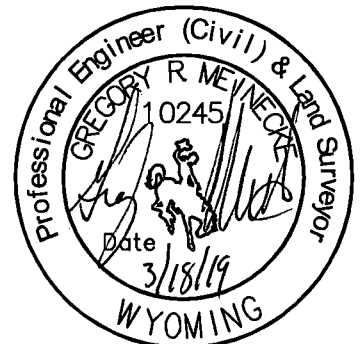
### CROSS INDEX DIAGRAM

	1	2	3	4	5	6	7	8	9	10	11	12	13	14	15	16	17	18	19	20	21	22	23	24	25	
A																										
B																										
C			6		5		4		3		2		1													
D																										
E																										
F																										
G			7		8		9		10		11		12													
H																										
J																										
K																										
L			18		17		16		15		14		13													
M																										
N																										
O																										
P			19		20		21		22		23		24													
Q																										
R																										
S																										
T			30		29		28		27		26		25													
U																										
V																										
W																										
X			31		32		33		34		35		36													
Y																										
Z																										
	1	2	3	4	5	6	7	8	9	10	11	12	13	14	15	16	17	18	19	20	21	22	23	24	25	

WOOD  
2615 AVIATION DRIVE  
SHERIDAN, WY 82801  
PH: 307-675-6400



THIS CORNER RECORD WAS  
PREPARED BY ME OR UNDER  
MY DIRECTION AND  
SUPERVISION,  
SEAL AND SIGNATURE



CORNER NAME: WEST QUARTER SECTION: 31 T. 18 N., R. 62 W. ; 6TH P.M. CROSS-INDEX # X-1  
SBRPELS/PLSW: MARCH 1994; PLSW JANUARY 1998